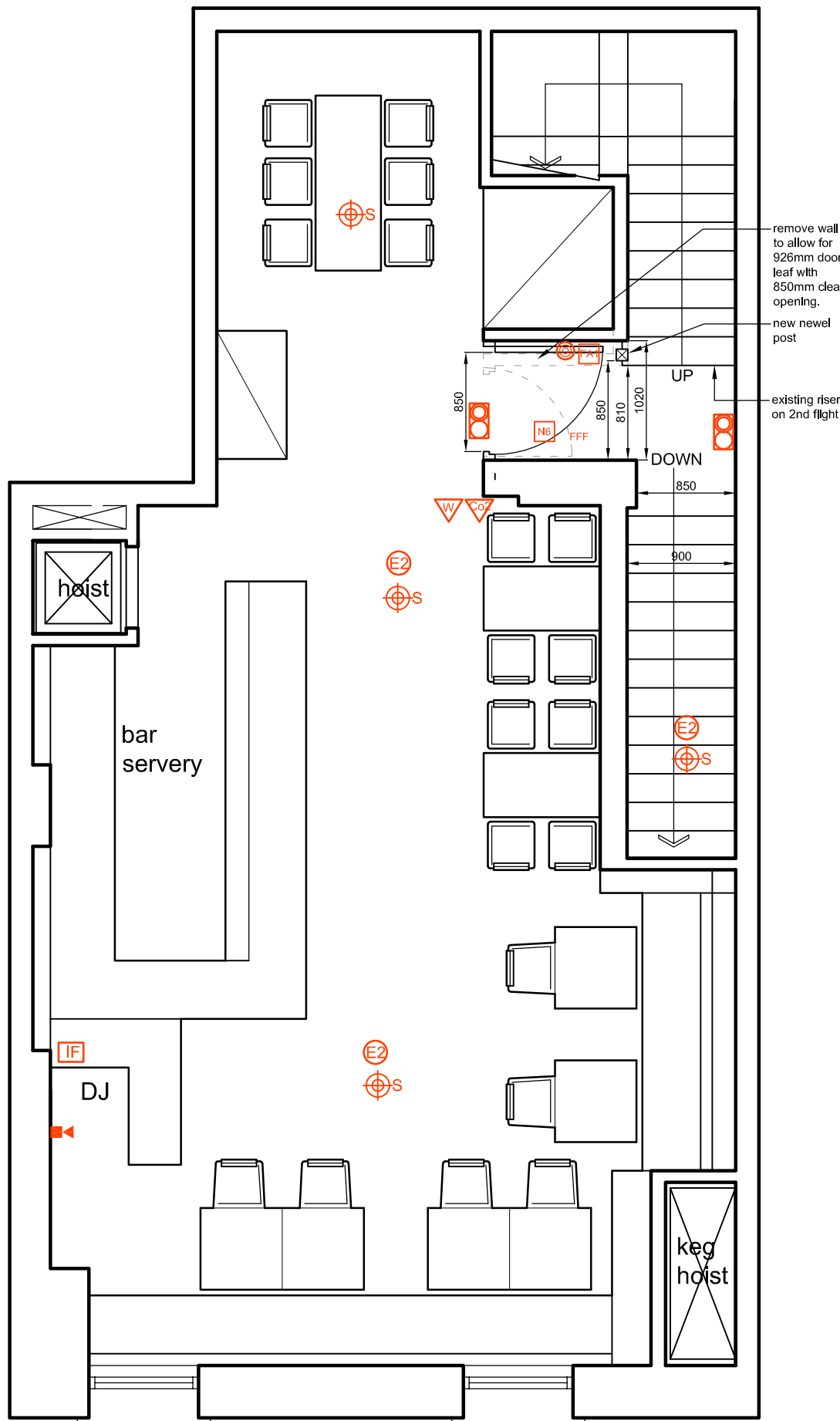
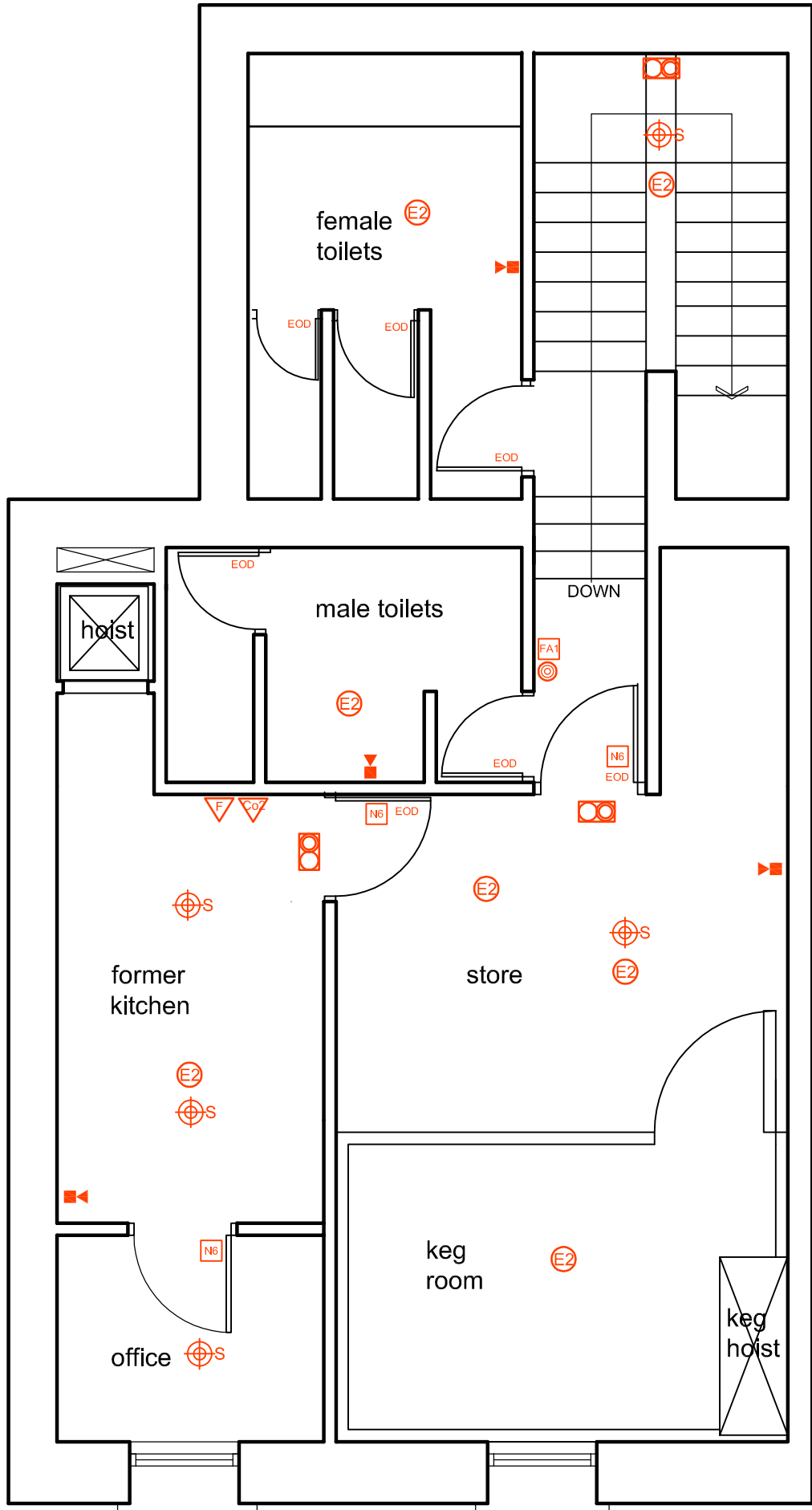


Ground Floor



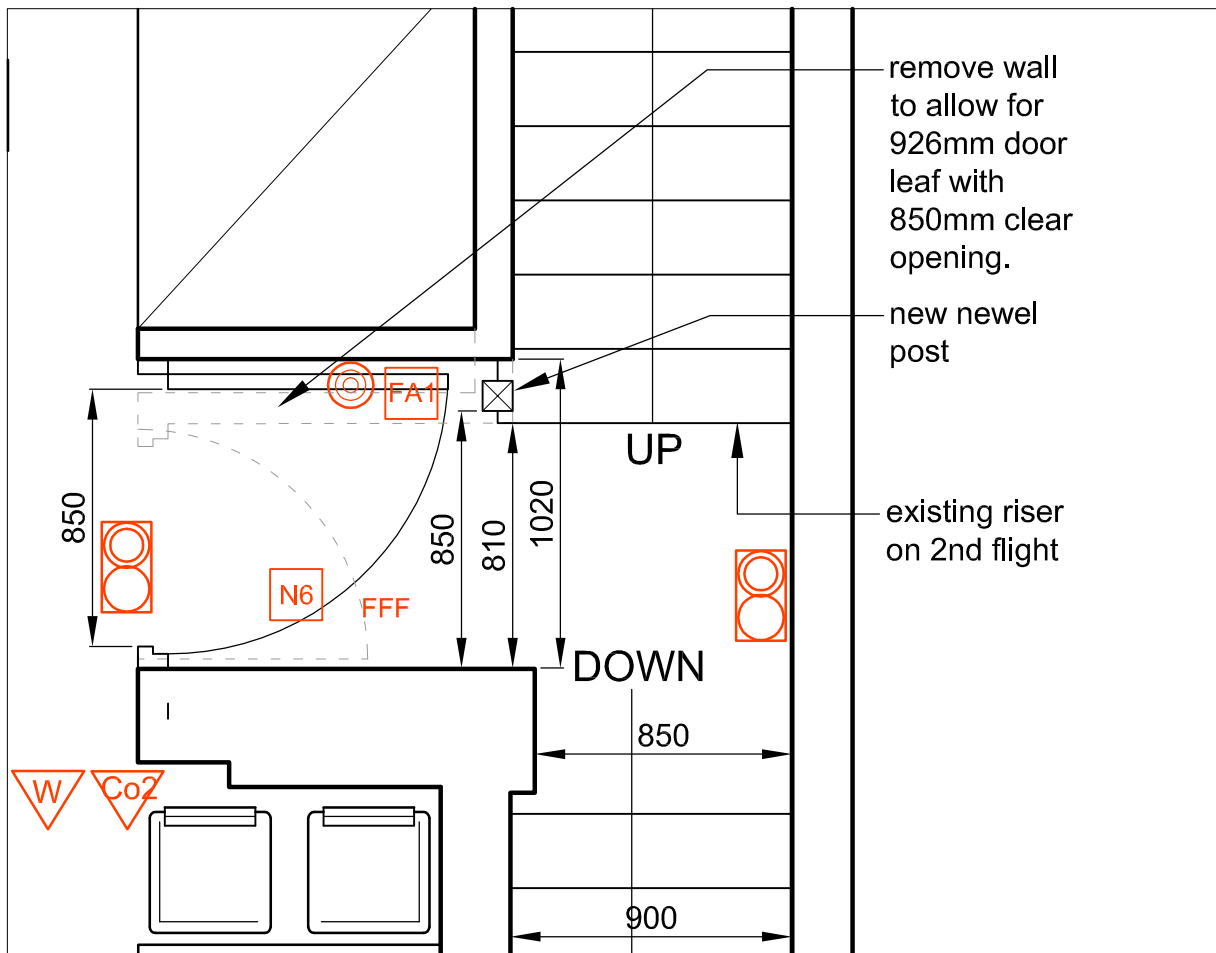
First Floor (proposed)



Second Floor

key to fire symbols			
	maintained, self contained emergency exit sign with approach	EDO	easy opening device
	Euro legend and 3 hour integral battery pack	FFF	free from fastenings
	non maintained, self contained emergency lighting with 3 hour integral battery pack	FRG	fire resistant glazing
	maintained, self contained emergency lighting with 3 hour integral battery pack - IP50 rated	FS	push bar to open
	wall mounted escaper with integral strobe light	SC	self closing device
	audible warning device	VP	vision panel
	ceiling mounted smoke detector	SS	cold smoke seat
	ceiling mounted heat detector		fire resisting door 30 mins minimum
	ceiling mounted smoke detector in roof void		fire resisting door 60 mins minimum
	fire alarm call point		general fire notice
	refuge call point		"fire exit - keep clear" notice
	disabled refuge panel		"fire door - keep shut" notice
	fire alarm panel		"touch bar to open" notice
	interface with fire detection system		to remain unlocked and in open position while premises are in use
	1HRFR fire shutter linked for fire detection system		"fire door - keep locked" notice

Fire detection system, emergency lighting and exit signs and portable fire fighting equipment to comply fully with the following BS codes:
Exit signs and notices to BS 5499 pt. 1
All emergency lighting to comply with BS 5266: 2005
Fire detection systems and alarms to BS 5839:1:2002 (L1)
Extinguishers and other fire fighting equipment shall comply with BS5423 and/or BS5274



First floor detail - 1:25

REVISIONS:
Revision A 09-12-15
Proposed adjusted door opening on 1st floor amended.

GENERAL CONTRACTORS NOTE

All levels and dimensions to be checked on site and any discrepancies should be referred to O'Donnell O'Neill Design Assoc.Ltd. for their direction. Work to figured dimensions ONLY. Do not scale off these drawings.
It is the responsibility of the appointed contractor to ensure that both they and their nominated sub contractors, their nominated suppliers, and the client direct nominated sub contractors and suppliers ensure that all materials and workmanship comply with the relevant Building Regulations and that all Health and Safety regulations are implemented. All to be in full compliance with The Building Regulations Technical Documents 1997-2015. Refer to engineers drawing for all structural elements details.

wall key:	
	new walls - for fire rating refer to Architects details and specifications
	existing walls
	demolitions

**Donnell
Neill**

INTERIOR ARCHITECTS & DESIGNERS
1 Upr. Georges Street, Dun Laoghaire, Co. Dublin
tel:01 2300066 fax:01 2145776
email : info@ooda.ie
5 Stranmillis Road, Belfast BT95AF
tel:028 90668363 fax: 028 90663345
email belfast@ooda.ie
www.ooda.ie

**STAGE
INFORMATION**

General Contractors Note:
It is the responsibility of the appointed contractor to ensure that both they and their nominated sub contractors, their nominated suppliers, and the client direct nominated sub contractors and suppliers construct all elements of the project in full compliance with The Building Regulations (Northern Ireland) 2012 Technical Booklets.

CLIENT: Janine Kane	
JOB: The Spaniard	
TITLE: Proposed fire safety plans	
SCALE: 1:50 (A1)	FILE: 1598
DATE: Dec 2015	DRAWN BY: GD
DRAWING NO: 1598-01	REVISION: A

These drawings are copyright © of O'Donnell O'Neill Design Assoc. Ltd who reserve all its rights, title and intellectual property rights in and to all designs, drawings and documentation. No work or designs on these drawings shall be reproduced or copied without written permission.

